



# MONTHLY MEMBERSHIP PROGRESS REPORT

District 23 C

Results as of: 10/31/2017

GMT: MAHESH CHITNIS

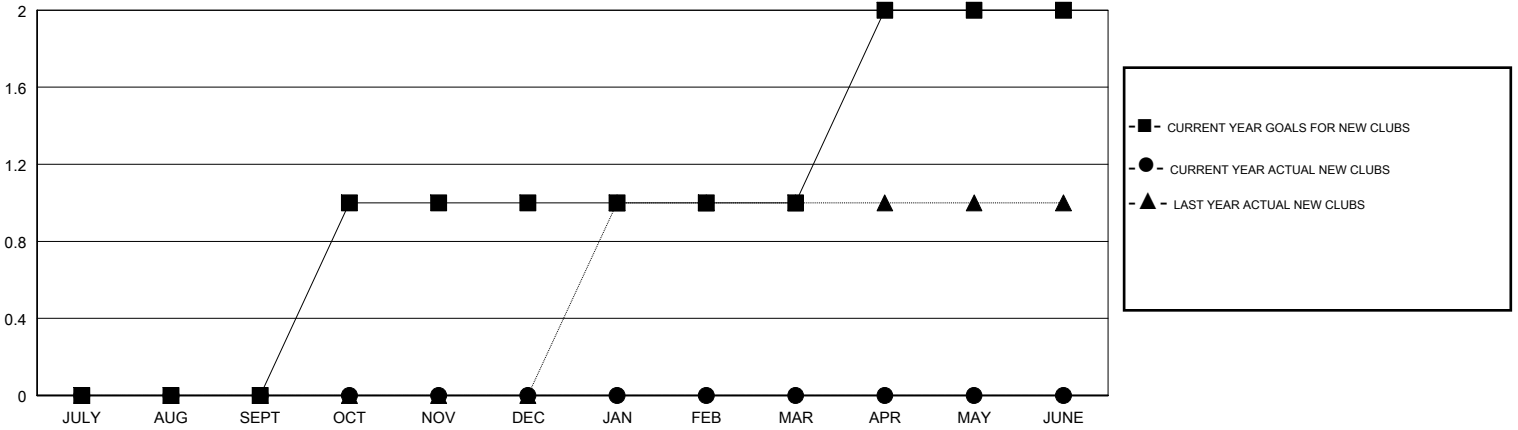
LOCATION CONNECTICUT

GMT CA

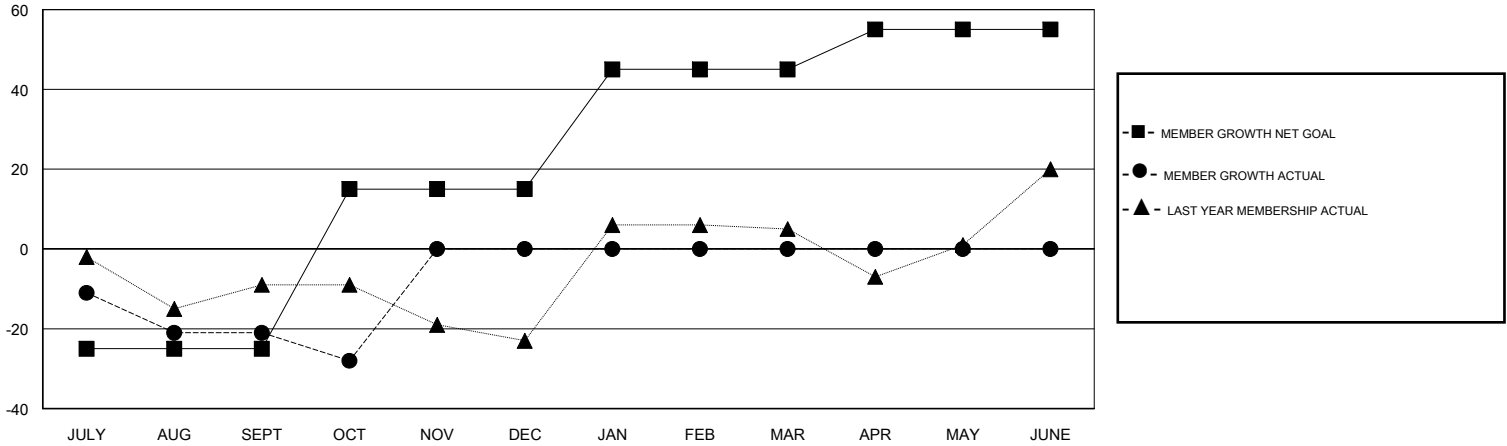
Clubs			
RESULTS FOR 2017-2018			
QUARTER	NEW CLUB GOAL	NEW CLUBS	DROPPED CLUBS
JULY/AUG/SEPT	0	0	0
OCT/NOV/DEC	1	0	0
JAN/FEB/MAR	0	0	0
APR/MAY/JUNE	1	0	0

Members			
RESULTS FOR 2017-2018			
QUARTER	MEMBER GROWTH NET GOAL	MEMBER GROWTH ACTUAL	DROPPED MEMBERS ACTUAL (including transfers)
JULY/AUG/SEPT	-25	5	26
OCT/NOV/DEC	40	16	23
JAN/FEB/MAR	30	0	0
APR/MAY/JUNE	10	0	0

GOALS AND ACTUAL NEW CLUBS CUMULATIVE



GOALS AND ACTUAL MEMBERS CUMULATIVE



DROPPED CLUBS: 0	8 CLUBS OF 53 ADDED 1 OR MORE NEW MEMBERS	<b>GENDER DISTRIBUTION</b> MALE 1,080 (63.83%) FEMALE 612 (36.17%) Women Percentage Fiscal Year Goal: 40%
<b>DROPPED MEMBERS</b> DECEASED 6 CLUB CANCELLED 0 OTHER 43 TOTAL 49	<a href="#">CLICK HERE FOR CUMULATIVE MEMBERSHIP DATA</a>	TOTAL FAMILY UNIT MEMBERS 320 FAMILY MEMBERS PAYING HALF DUES 164